

# Diving into Mastery - Diving

## Adult Guidance with Question Prompts

Children may need a clock for this activity.

Remind children that at o'clock, the hour hand should be pointing exactly to the hour. At half past, the hour hand should be halfway between the hours. This is how the hour hand moves around a real analogue clock.

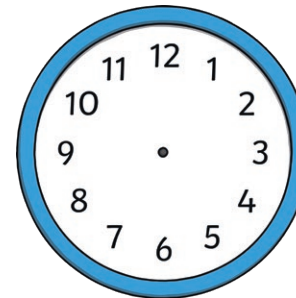
Where does the minute hand point when it is o'clock?

Where does the minute hand point when it is half past?

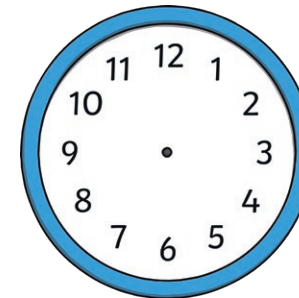
## O'Clock and Half Past



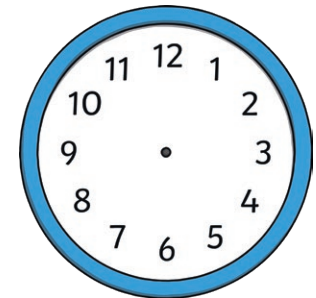
Draw the hands on each clock to show the correct time.



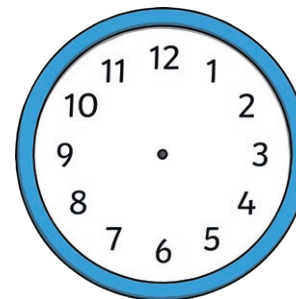
half past 3



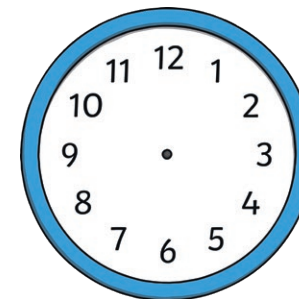
8 o'clock



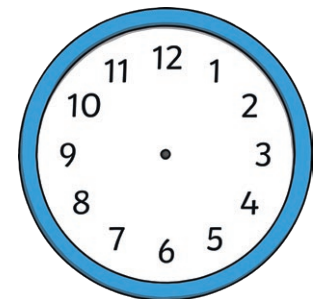
half past 1



half past 10



4 o'clock



6 o'clock

# Diving into Mastery - Deeper

## Adult Guidance with Question Prompts

Children may need a clock for this activity.

If the minute hand points to 12, is it o'clock or half past?

What about if the minute hand is pointing to 6? What does that tell us?

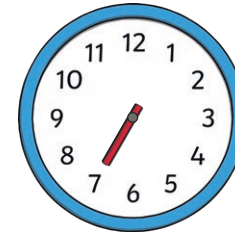
Why is the position of the hour hand important?

## O'Clock and Half Past



The clock in Hannah's kitchen has lost its minute hand.

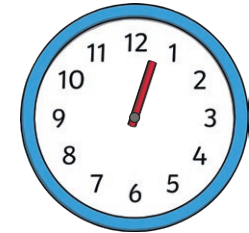
Can you work out what times Hannah ate at?



The hour hand is \_\_\_\_\_  
\_\_\_\_\_.

The minute hand would be pointing to \_\_\_\_\_.

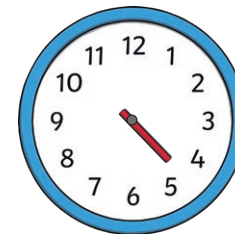
The time is \_\_\_\_\_.



The hour hand is \_\_\_\_\_  
\_\_\_\_\_.

The minute hand would be pointing to \_\_\_\_\_.

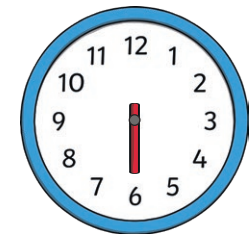
The time is \_\_\_\_\_.



The hour hand is \_\_\_\_\_  
\_\_\_\_\_.

The minute hand would be pointing to \_\_\_\_\_.

The time is \_\_\_\_\_.



The hour hand is \_\_\_\_\_  
\_\_\_\_\_.

The minute hand would be pointing to \_\_\_\_\_.

The time is \_\_\_\_\_.

# Diving into Mastery - Deepest

## Adult Guidance with Question Prompts

Children may need a clock for this activity.

How could we start to solve this problem?

Would writing down the start times help?

Encourage children to start listing the times: half past 6, half past 7, etc.

How can we use that information to answer the question?

Where will the minute hand be in all our answers?

## O'Clock and Half Past



It was a hot, sunny day when Tina went to a concert.

At the concert, she drank a glass of water at half past every hour. The concert started at 6 o'clock and finished at midnight. At what times did Tina drink her water? Draw the times on these clocks.

